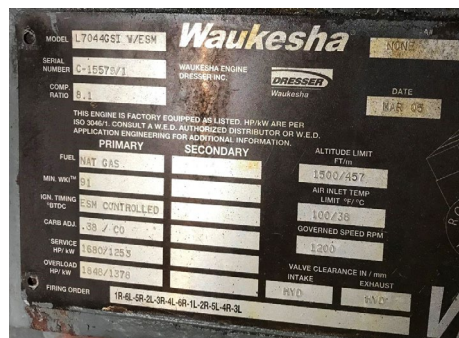
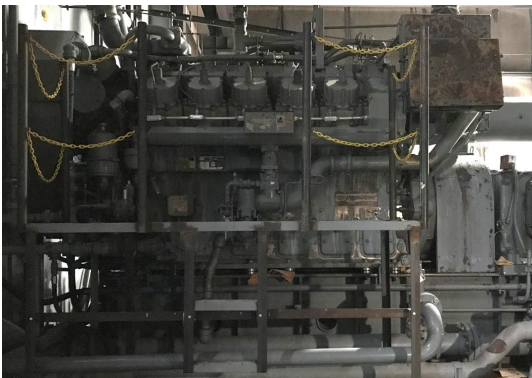


# Used Compressor Package Waukesha 7044GSI-ESM Gemini ES604 2-Stage Compressor



## ES604

4-Throw Rated Power (BHP)	2,400
Stroke (in)	6
Max RPM	1,200
Piston Speed	5.72
Rod Diameter (in)	2.25
Total Rod Load (lbs)	97,500
Tension (lbs)	47,500
Rod Load Compression (lbs)	50,000

## Waukesha 7044GSI-ESM

Cylinders	V12
Piston Displacement (cu. in.)	9.7:1
Bore & Stroke	9.375" x 8.5"
Jacket Water System Capacity (gal.)	100
Lube Oil Capacity (gal.)	190
Starting System	24V electric

## Package Details

Gemini Serial No.	WPI 769
MAWP	1650 PSIG
Waukesha Serial No.	C-15579/1
OEM HP	1680
Fuel	Natural Gas
Cylinders	2-9.625 2-5.875
Cooler Make	Harsco
Cooler Serial	13048601

## High-Speed Reciprocating Compressors for Natural Gas Applications

The Gemini ES Series compressors have a long, successful history in natural gas applications and are readily resized and reapplied in the field.

