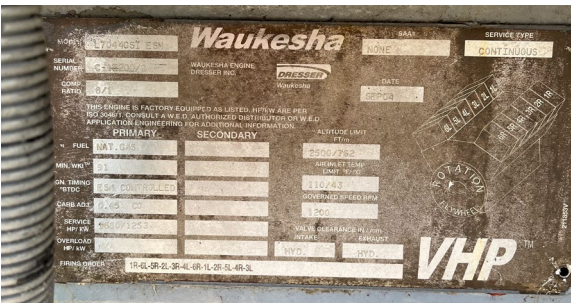


# Used Compressor Package Waukesha 7044GSI-ESM with Ariel JGK/4 2-Stage Compressor



## JGK4

4-Throw Rated Power (BHP)	2,140
Stroke (in)	4.5
Max RPM	1,500
Piston Speed	5.72
Rod Diameter (in)	1.125
Total Rod Load (lbs)	60,000
Tension (lbs)	30,000
Rod Load Compression (lbs)	32,000

## Waukesha 7044GSI-ESM

Cylinders	V12
Piston Displacement (cu. in.)	9.7:1
Bore & Stroke	9.375" x 8.5"
Jacket Water System Capacity (gal.)	100
Lube Oil Capacity (gal.)	190
Starting System	24V electric
125 - 150 psi air/gas	

## Package Details

Ariel Serial No.	
MAWP	1650 PSIG
Waukesha Serial No.	C-15200/2
OEM HP	1680
Fuel	Natural Gas
Cylinders	2-9.625 2-5.875
Cooler Make	AXH
Cooler Model	108-FF2

## Designed to Run, Built to Last

Ariel's design philosophy is about providing customers with a successful, worry-free operation. As a result, Ariel compressors run longer and require minimal maintenance, providing maximum reliability in the field and peace of mind for operators.

