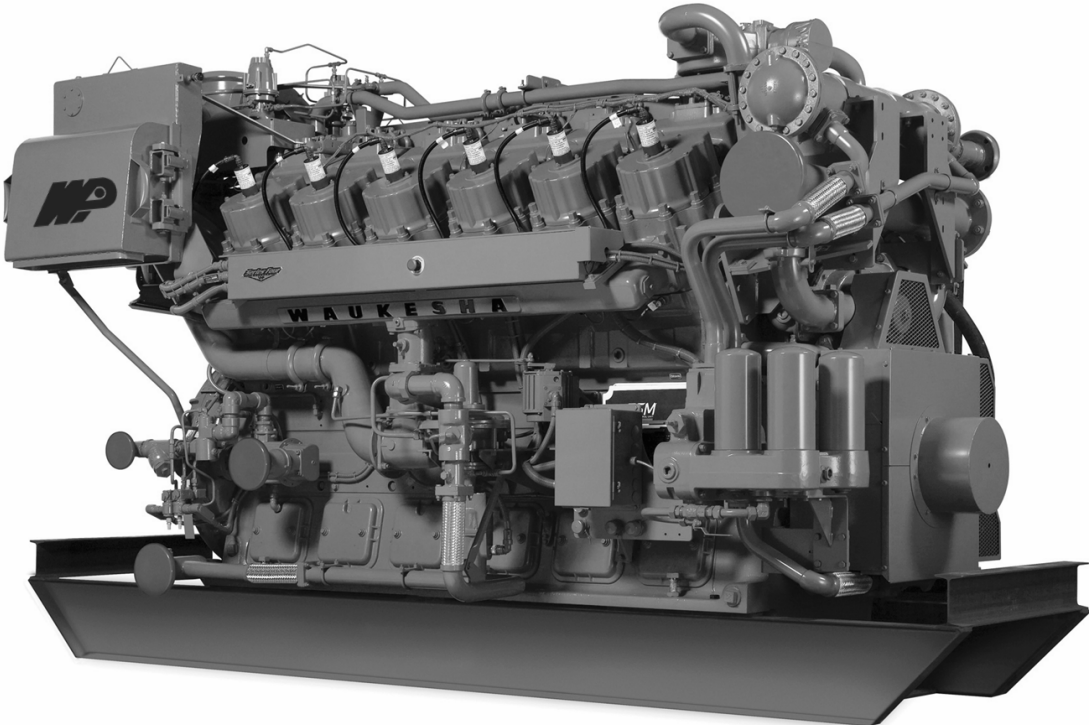


Waukesha L7042GSI-S4



Model	L7042GSI-S4
Horsepower	987-1480
Fuel Type	Natural Gas
Cylinders	12
Displacement	7,040 cu in
Compression Ratio	8:1
Bore & Stroke	9.375" x 8.5"
Starting System	125 - 150 psi air/gas 24V electric
Jacket water system capacity	100 Gal.

