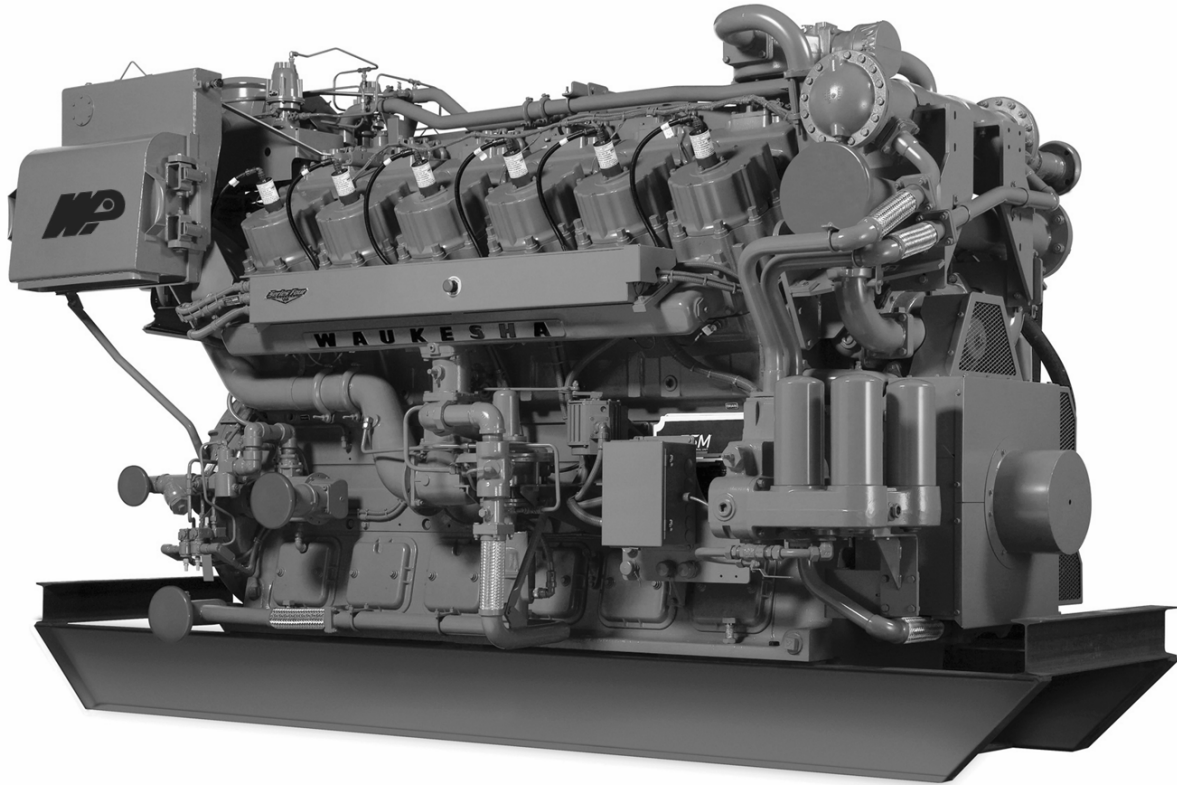


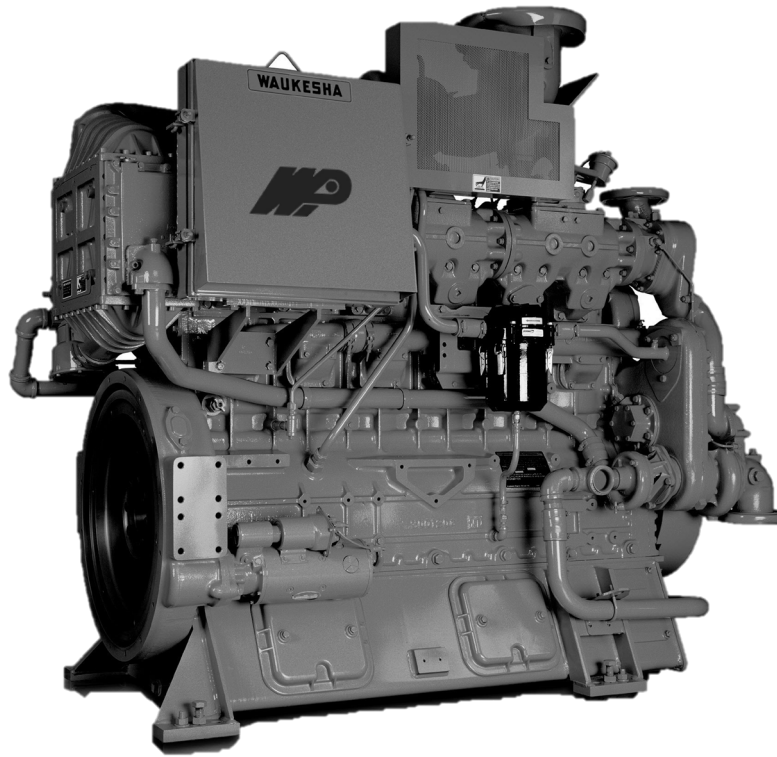
# Waukesha L5794GSI



Model	L5794GSI
Horsepower	920 – 1380
Fuel Type	Natural Gas
Cylinders	12
Displacement	5788 cu in
Compression Ratio	8.25:1
Bore & Stroke	8.5 in x 8.5 in



# Waukesha F18GSI-LCR/HCR



Model	F18GSI-LCR/HCR	
Horsepower	355 – 585	
Fuel Type	Natural Gas	
Cylinders	8	
Displacement	1462 cu in	
Compression Ratio	LCR 8.7:1	HCR 11:1
Bore & Stroke	5.98 in x 6.5 in	
Starting System	150 psi max. air/gas 24V DC electric	



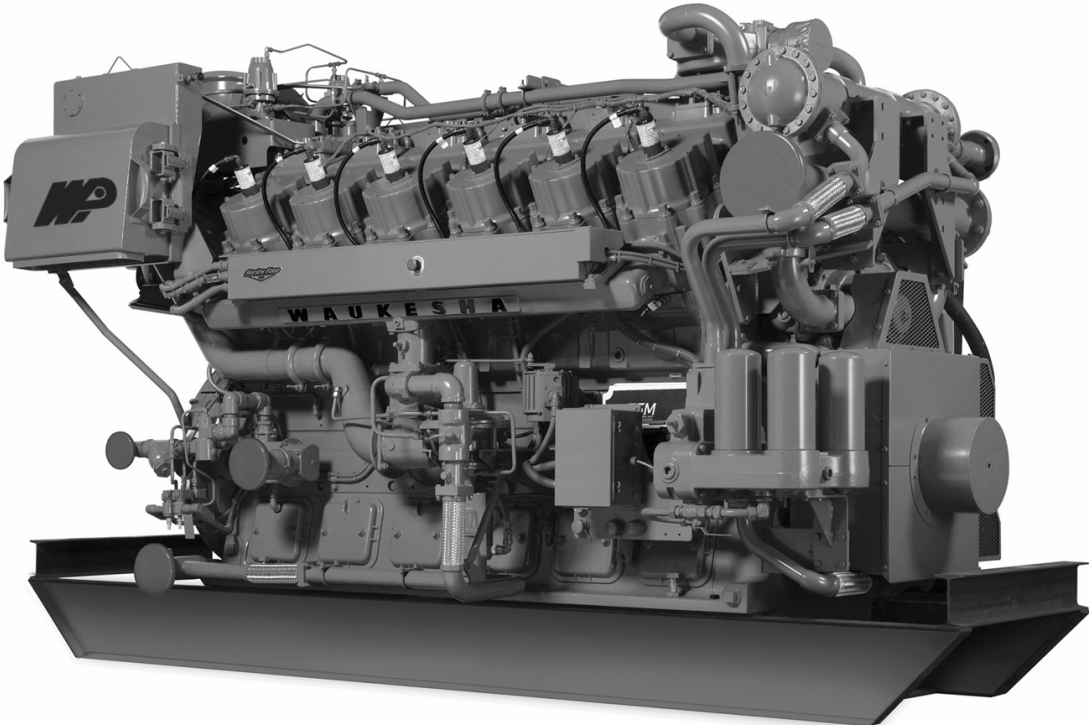
# Waukesha L7044GSI-S5



Model	L7044GSI-S5
Horsepower	1,583-1,900
Fuel Type	Natural Gas
Cylinders	12
Displacement	7,040 cu in
Compression Ratio	9.7:1
Bore & Stroke	9.375" x 8.5"
Starting System	125 - 150 psi air/gas 24V electric
Jacket water system capacity	100 Gal.



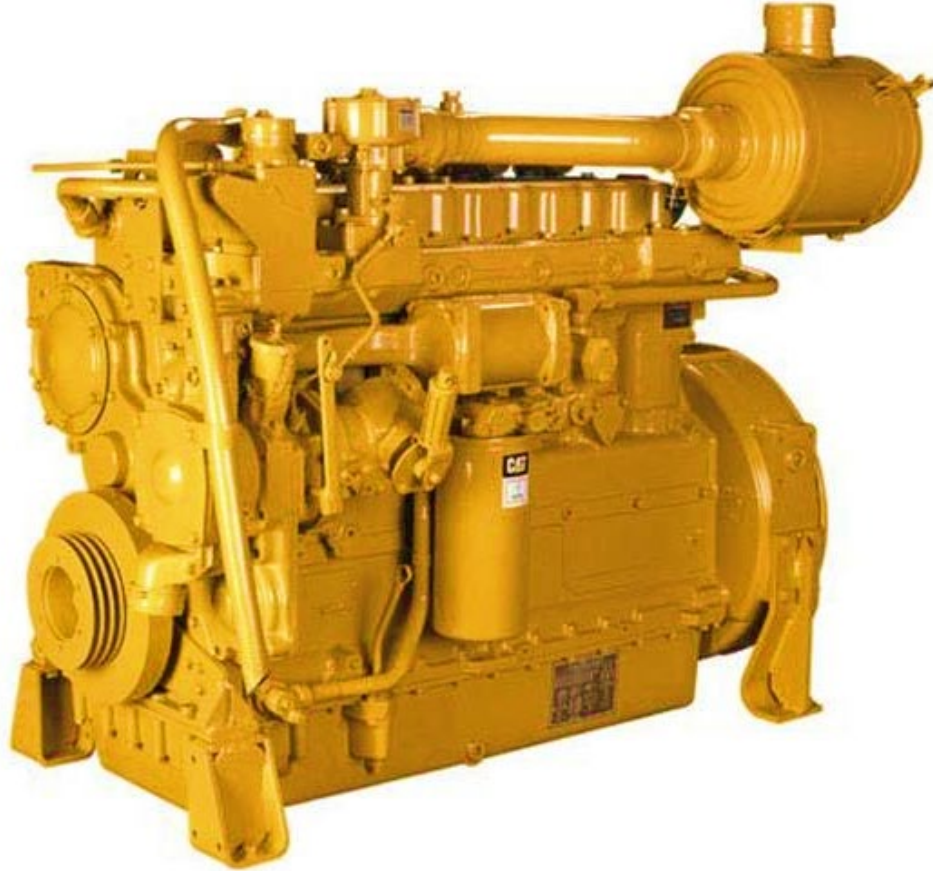
# Waukesha L7042GSI-S4



Model	L7042GSI-S4
Horsepower	987-1480
Fuel Type	Natural Gas
Cylinders	12
Displacement	7,040 cu in
Compression Ratio	8:1
Bore & Stroke	9.375" x 8.5"
Starting System	125 - 150 psi air/gas 24V electric
Jacket water system capacity	100 Gal.



# Caterpillar G3306-TA

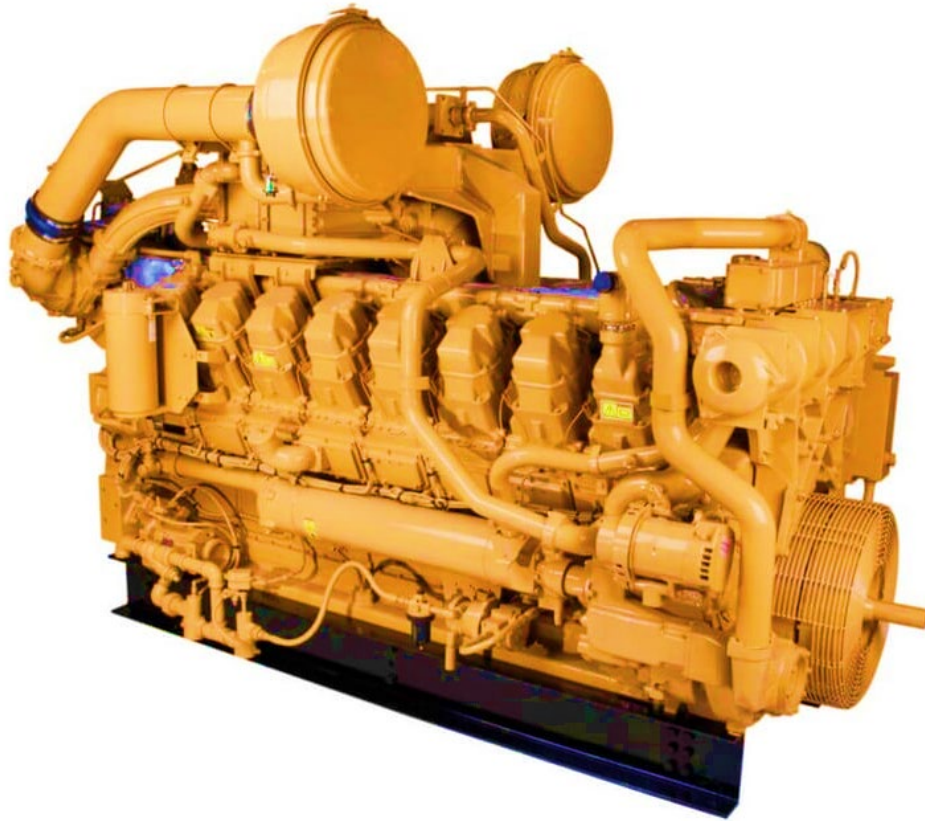


Model	G3306-TA
Horsepower	203
Fuel Type	Gas
Cylinders	6
Displacement	638 cu in
Bore & Stroke	4.75" x 6"
Jacket water system capacity	5.3 Gal.





# Caterpillar G3516-B



Model	G3516-B
Horsepower	1380
Fuel Type	Gas
Cylinders	16
Displacement	4230 cu in
Bore & Stroke	7.5" x 6.7"
Jacket water system capacity	58.5 Gal.

